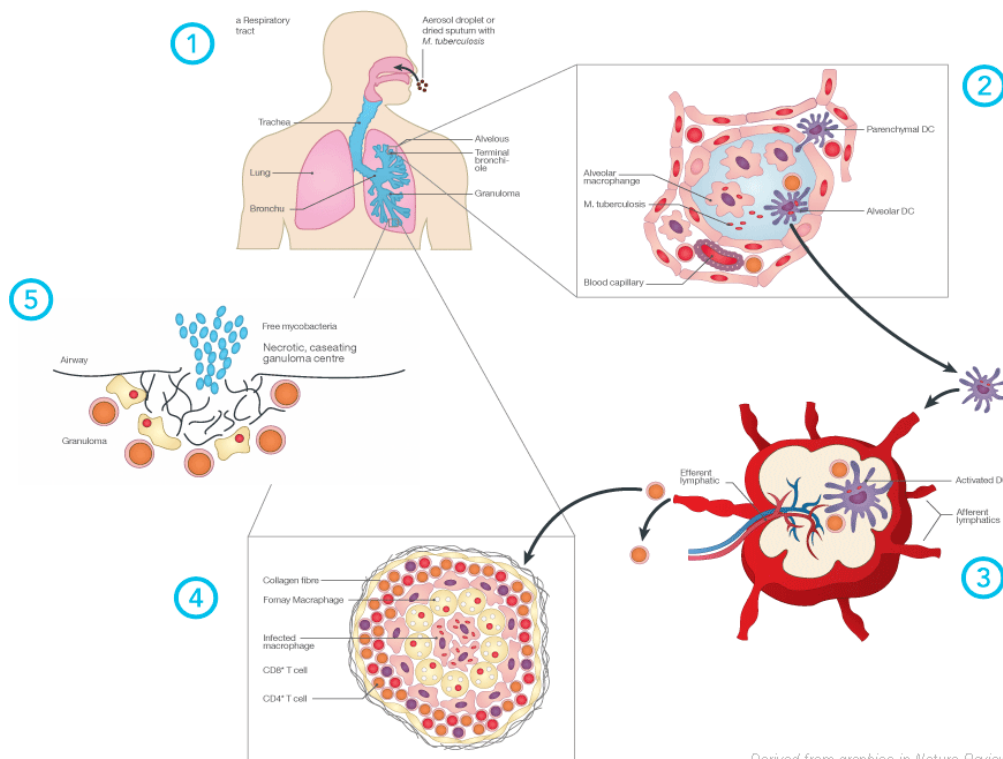


Unit 2: Etiology

Activity 2: TB Transmission

1. Order the following list of steps involved in becoming infected with pulmonary tuberculosis.

- _____ TB bacteria are contained within the tubercle and infection is considered latent.
- _____ T-cells recognize the particles of TB bacteria as a threat. They help to form a tubercle around the bacteria to isolate them and protect the body.
- _____ The immune system responds to the foreign bacteria. Macrophages, white blood cells, engulf the TB bacteria but the bacteria are able to multiply and burst out of the macrophages.
- _____ The bacteria are inhaled and enter the lungs.
- _____ Dendritic cells engulf the TB bacteria, break them down into small particles, and transport the particles to the lymph nodes.
- _____ If the immune system is weakened the tubercle may break down, releasing bacteria back out into the body causing renewed active infection.



Derived from graphics in *Nature Reviews: Microbiology*